

Operation Manual



Product Name : Check-Right
SCR-3050SLS



세일리코 주식회사

SEILIECO CORP. 경기도 군포시 산본로
101번길 9-3 (당정동)

TEL : 82-31-429-6462, FAX : 82-31-429-6466

<http://www.seilieco.com>

Dangjungdong 9-3 Sanbon-ro 101beon-gil, Gunpo-si
Gyeonggi-do, Rep of Korea.

Table of Contents

1. Product Specification	P2
2. Products Explanation	P2
3. How to operate	P3~9
4. Precautions	P10
5. Product warranty		

* 첨부

- A/S 신청서

(A/S 신청서 양식은 복사하여 사용하시고 정확하게 기재하여 주십시오.)

Rev. 2.0 2016. 04. 06

1. Product Specification

Model Name	Check-Right
Specification	SCR-3050SLS (Syringe Type)
Outer Size	500×330×284
Weight	12.4kg
In-door Temperature Sensor	0 ~ 99℃ (Measurement Deviation : ±2.0℃ at 25℃)
Infrared Light Sensor	0 ~ 60℃ (Measurement Deviation : ±0.5℃ at 25℃)
Temperature in use	In-door Room Temperature
Components of Products	Main Body, Power Supply Cable, Label Paper(Consumable)
Indication Content	LCD: Solder Paste Container Surface Temperature, Room Temperature, Date, Time
Data Output	Label Type Panel Printer 12v 3A (Auto Output if Container is removed)
Data Output Paper	φ 60 Roll Paper
Input Power Supply	AC 220V
Consumable Power	40W
CASE Material	White color

2. Products Explanation

1) Use of product

- It is a device to measure the usability of the Solder Paste in cold storage by Room Temperature, and if the Room Temperature is completed, it automatically records the Temperature and Time on the Check Label for the correct maintenance basis.

2) Operation Explanation

- A. If the Solder Paste in cold storage is inserted into the Holder, Temperature Measurement, Time Recording, and Usability are distinguished.
- B. Shown by Red LED(Stand-by) if the Measured Temperature of Solder Container is lower than the Room Temperature.
- C. Shown by Green LED(Complete) with Buzzer Alarm if the Measured Temperature is completed up to Room Temperature.

3) DISPLAY

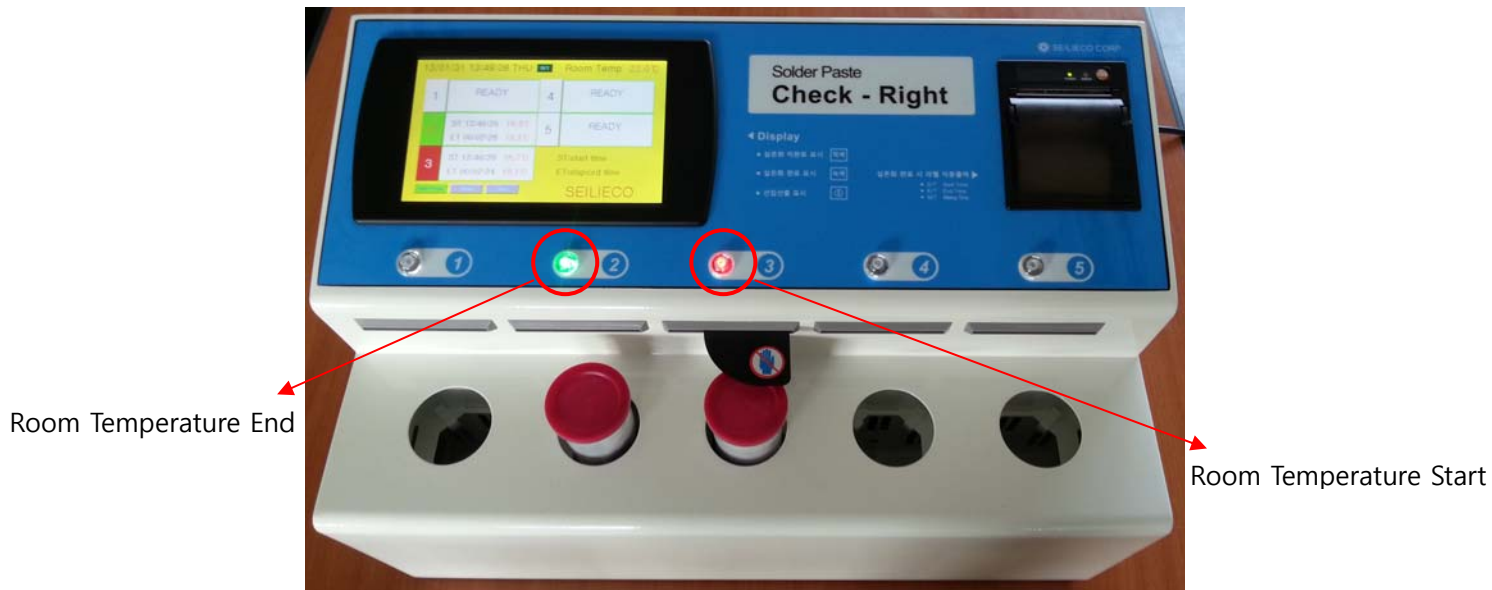
- LCD : Shows the Insert Time and the Solder Paste Temperature of each Holder. Start Time (ST), Current Time (CT), End Time(ET), Date and Time, In-door Temperature.

4) Label Output if Room Temperature is completed

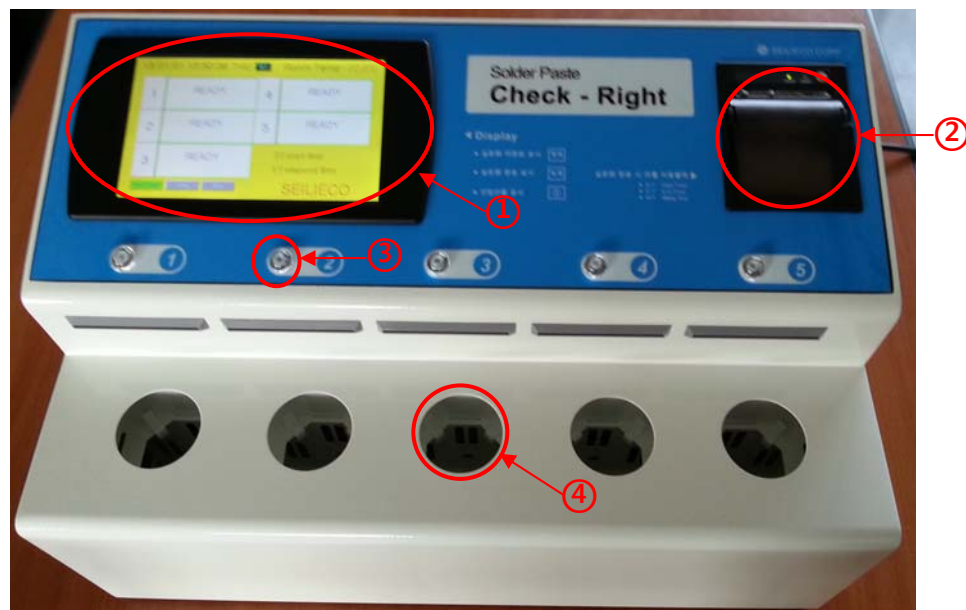
- Holder No, Solder Paste Start/End Temperature, In-door Temperature, Start Time (S/T), End Time (E/T)

3. How to operate

- 1) Insert Solders in cold storage into each hall. (No matters if only one inserted)
- 2) The LED display on each of red, LCD displays time and temperature on the operation the plate motion LOCKING.
- ※ LOCKING touch panel operation because of danger of damage to the motor will not touch
- 3) LED is changed from red color to green color with alarm if Room Temperature is completed, and the Label is automatically printed with memorized Room Temperature completion time and temperature if Solder Cream is used.

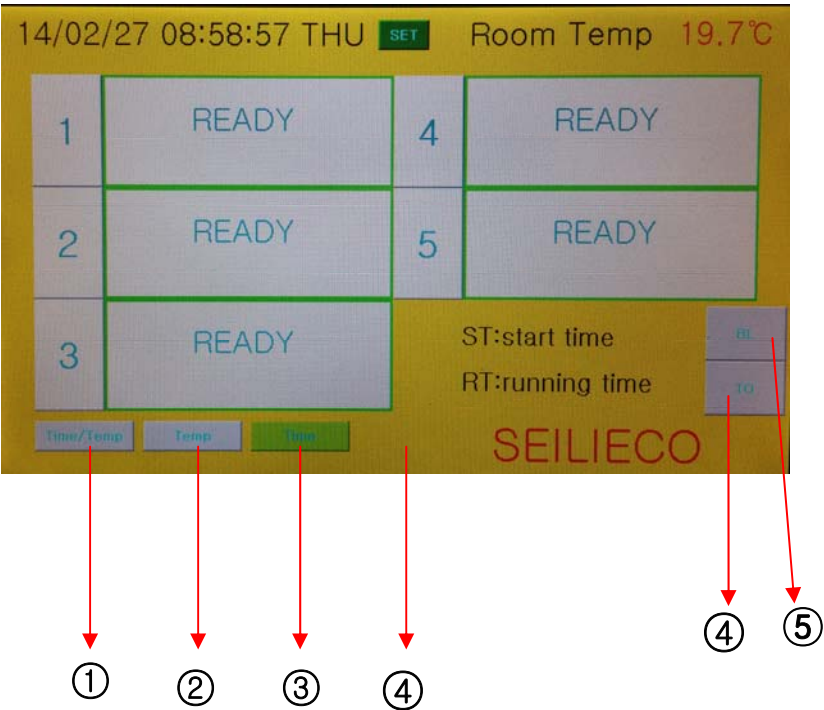
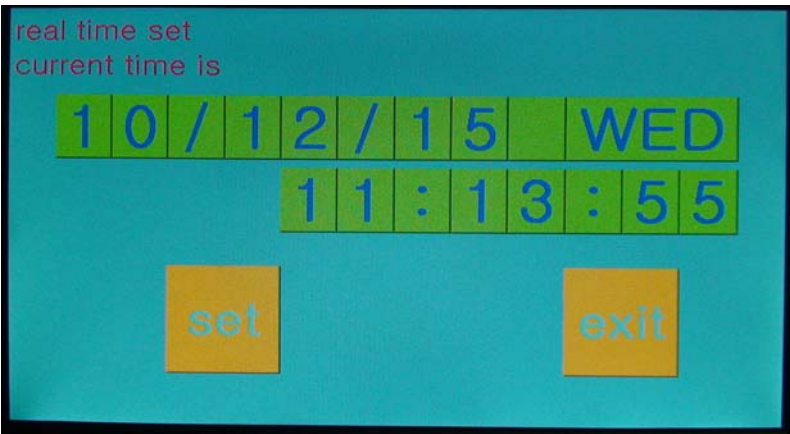
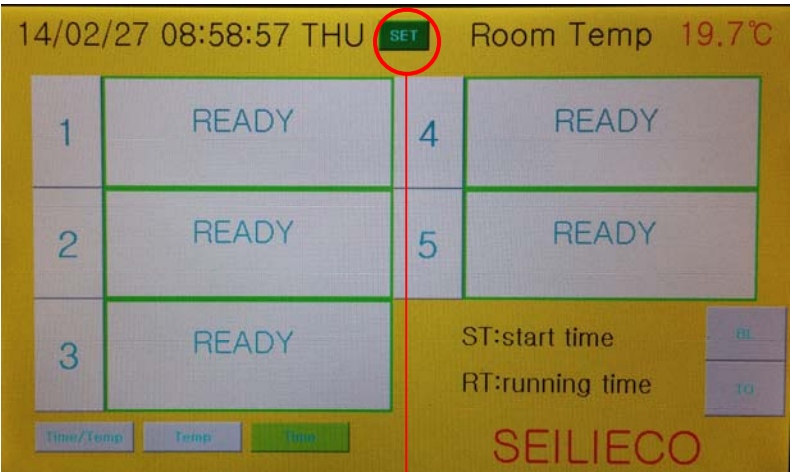


3-1. Explanation of Name for each Part of Product



- ① LCD : Operation Time, Temperature, Date and Time, In-door Temperature.
② Panel Printer : Printer Output.
③ LED : Operation Signs.
④ Holder : Solder Paste inserting into Container.

3-2. Preparation Work before Use

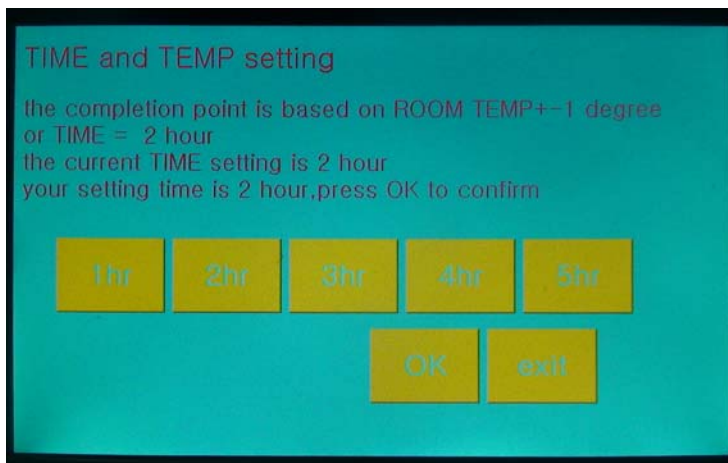


(1) Time & Date Setting

When adjusting time or date, press a set button first and then, touch and adjust where to be adjusted.

(2) Mode setting

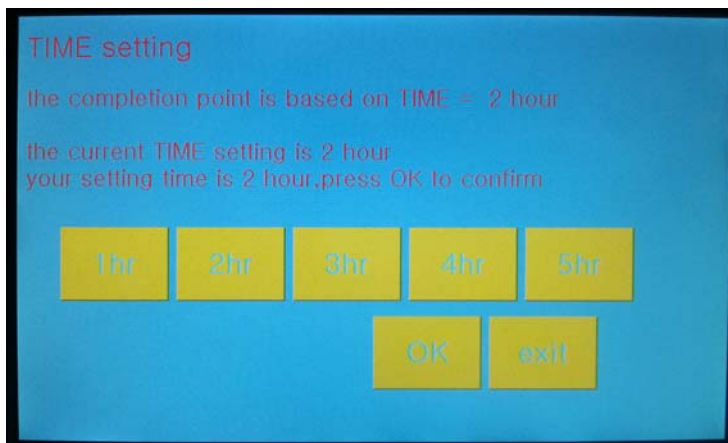
Can be changed when the operation mode is changed, the holder does not contain a container.



① TIME and TEMP mode

After set time is over or room temperature is reached within the time thus set, buzzer sounds.

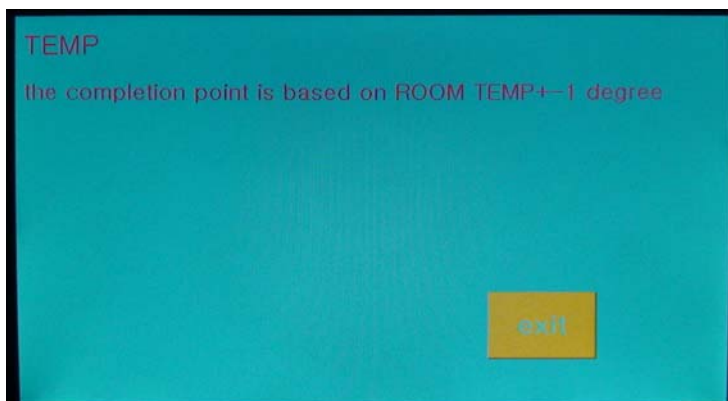
- ※ After setting time, be sure to press ok button and exit, otherwise setting may not be complete (done).



② TIME Mode

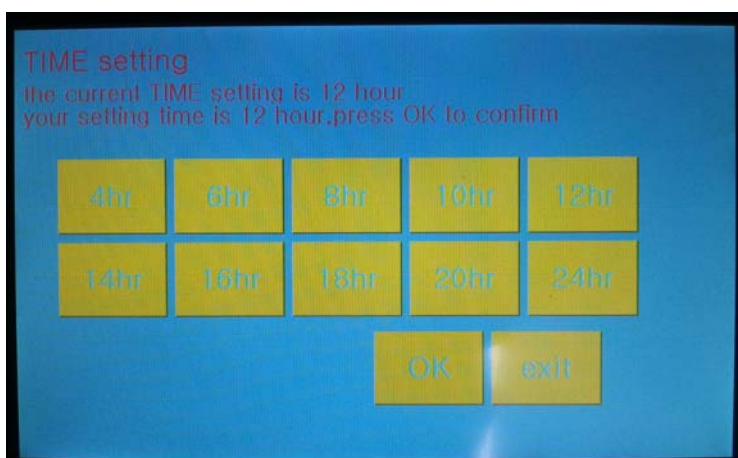
After set time is over ,buzzer sounds.

- ※ After setting time, be sure to press ok button and exit, otherwise setting may not be complete (done).



③ TEMP Mode

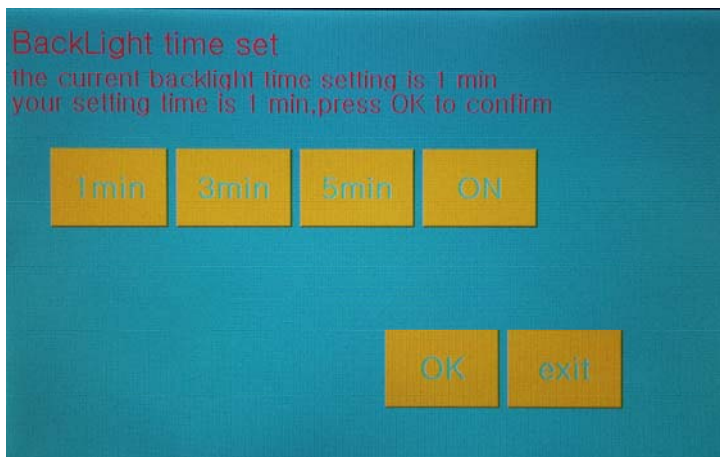
If TEMP mode is set, when room temperature is reached irrespective of the time thus set, buzzer sounds.



④ NG MODE

NG (over time) from 4 hours to 24 hours of time can be set.

- ※ After setting time, be sure to press ok button and exit, otherwise setting may not be complete (done).



※ always ON with Backlight settings can be shortened life expectancy at
(Recommended setting)

⑤ Monitor Backlight setting

1) 1min / 3min / 5min / ON

Screen after a set period of time has elapsed Off

(ON is always on)

2) Screen when the screen is off

Touch the screen on.

3) In the solder container or

Pick up on the screen.

4) On completion of the screen at room temperature

※ After the time set on the OK button If you exit without pressing Not set.



Label paper

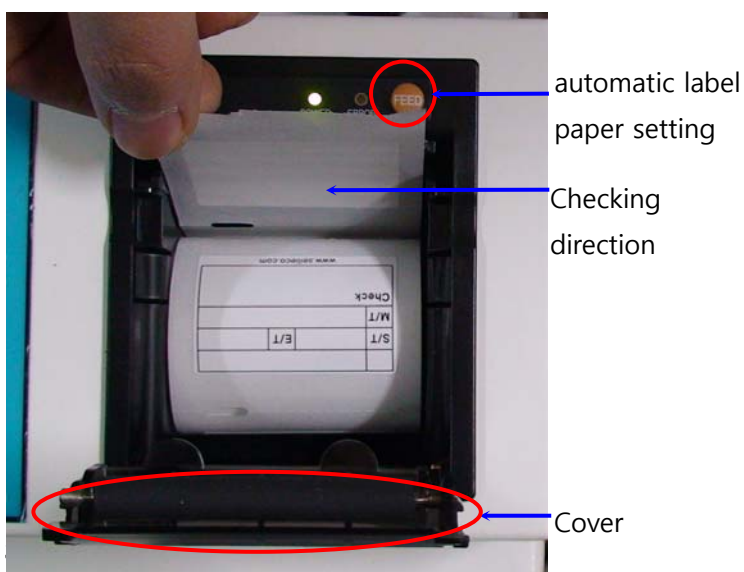
⑦ How to install label paper.

※ How to insert Φ 60 Roll Paper

1)Open a cover and insert paper as shown in the picture.

2)Hold paper and close the cover as shown in the picture .

3) Press FEED.



3-3. How to use



1) Turn on power on the back of a unit..

– Install the device at a preferably constant, indoor temperature of 20+ °C



2) Put cold Solder Paste container in a wanted holder

① LED

It is in red when in action.
It turns green when room temperature is reached.



② LCD

ST : Indicates when to start and applicable room temperature
CT : Indicates present time and container surface temperature.

3) Room temperature, as shown in the figure that was once the red LED turns solid green, 3 times 5 times the alarm buzzer will ring and the plate entering LOCKING.

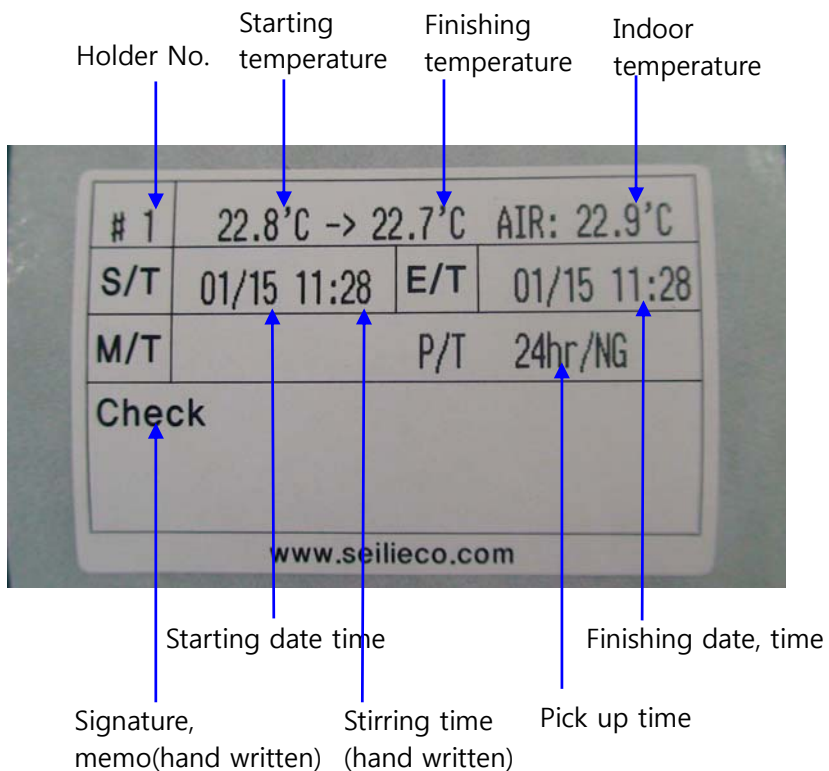


4) The time and temperature were room temperature when the container finish Tue removed and output, and then enters a room temperature plate LOCKING complete holder.
(First-in, first-out function)



5) Hour/NG

- Solder Paste **NG** elapsed time display.

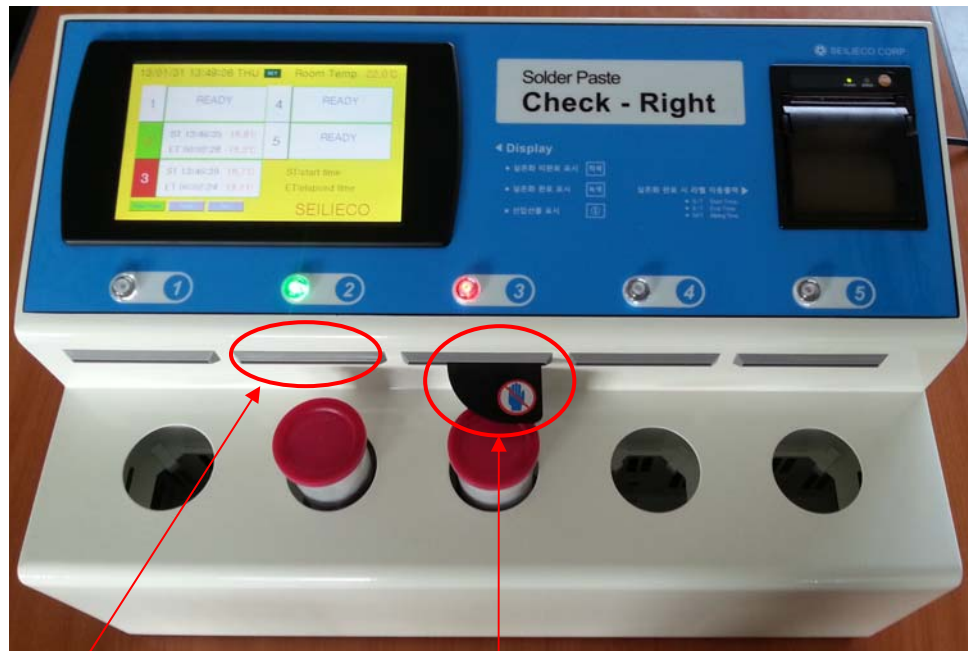


6) Check print output.



- Attach output print on solder container where room temperature has been reached, indicating that it is available for use.

4. Precautions



LOCKING plate at room temperature
after the completion of entering state

LOCKING plate from the state at room
temperature in progress

※ LOCKING touch panel operation because of danger of damage to the motor will not touch.

※ LOCKING forced termination devices when needed, please consult sales office